

# Downton Abbey®

## Lady Rose

FABRICS BY KATHY HALL



Lady Rose Quilt Design: **Lucy Fazely**

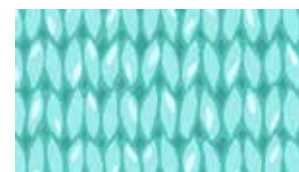
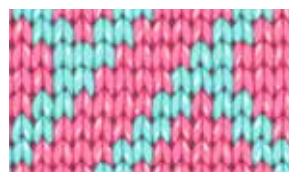
Quilt Size: **64" x 81"**

**andoverfabrics.com**



### About Lady Rose

Made up of daring designs, edging into the art deco era. Color-wise, her collection includes some of the purples she wore while the family was still in mourning for Cousin Matthew. However, her collection also features some of the rich, cobalt blues and bright, hot pinks that are so becoming to her coloring and her age. This collection also includes faux-knits and argyles that the Prince of Wales made so popular during 1920s.



Downton™ and Downton Abbey®. ©2013  
Carnival Film & Television Limited. All Rights Reserved.

andover

makower uk  
*The Henley Studio*

Free Pattern Download Available

1384 Broadway New York, NY 10018  
Tel. (800) 223-5678 • [andoverfabrics.com](http://andoverfabrics.com)

6/5/14

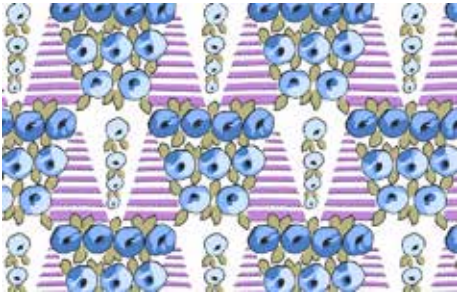




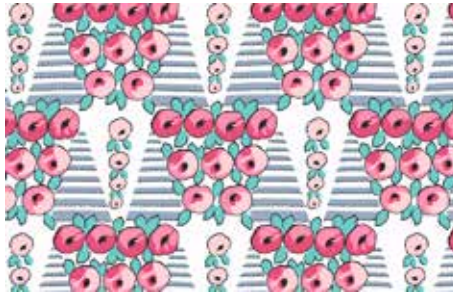
7611-B



7611-E



7612-B



7612-E 2 yds



7613-B ¼ yd



7613-E 5 yds  
(backing)



7614-EC ⅛ yd



7614-BP ⅛ yd



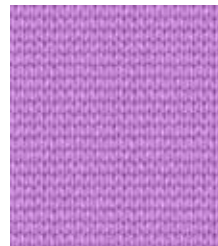
7615-B ¼ yd  
(includes binding)



7615-E ¼ yd



7616-BG ⅛ yd



7616-BP

Blend with additional fabrics from  
Downton Abbey®



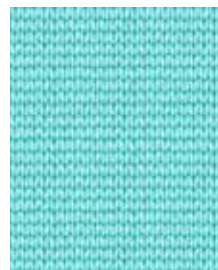
7330-OGL 1¼ yds



7598-R 2 yds



7616-EC



7616-EG

FABRIC	5 KITS	10 KITS	20 KITS
7612-E	1	2	3
7330-OGL	1	2	3
7598-R	1	2	3
FROM EACH	1	1	1
7613-B 7614-BP 7614-EC 7615-B			
7615-E 7616-BG			

#### BACKING

7613-E	2	4	7
--------	---	---	---

Yardage needed for backing:

5 YDS per kit

Bolts needed to cut project kits.

15 yds = 1 bolt

Fabrics shown are 25% of actual size.

Fabrics used in quilt pattern are shown  
in black

# Downton Abbey®

## Lady Rose

FABRICS BY KATHY HALL

Downton™ and Downton Abbey®. ©2013  
Carnival Film & Television Limited. All Rights Reserved.

andover : makower uk  
The Hanley Studio

6/5/14